



Government of India
Ministry of Earth Sciences
India Meteorological Department



Press Release

Date: 30th August, 2025

Time of Issue: 1315 hours IST

Subject: i) Isolated heavy rainfall spell likely to continue over Northwest India during next 4-5 days with isolated very heavy rainfall over Jammu on 30th; Himachal Pradesh on 30th & 31st and Uttarakhand during 30th August-01st September, 2025.

ii) Heavy rainfall likely to continue over Konkan & Goa, Madhya Maharashtra, Gujarat Region and Coastal Karnataka during next 7 days.

Realised weather during past 24 hours till 0830 hours IST of today, the 30th August, 2025:

- ❖ **Very heavy rainfall (12-20 cm)** has been recorded at isolated places over Gujarat Region, Sub-Himalayan West Bengal, West Uttar Pradesh, West Madhya Pradesh, Konkan, Madhya Maharashtra,
- ❖ **Heavy rainfall (7-11 cm)** has been recorded at isolated places over Jammu, Himachal Pradesh, Rajasthan, Punjab, Haryana, East Uttar Pradesh, Marathwada, Coastal & South Interior Karnataka, Arunachal Pradesh and Meghalaya.

For more details of realised weather, kindly refer [Annexure I](#).

i. Weather Systems, Forecast and Warnings (refer to Annexure II & III):

- ❖ The Monsoon trough at mean sea level runs south of its normal position.
- ❖ A **cyclonic circulation** lay over north Konkan and neighbourhood in middle tropospheric level.
- ❖ An **upper air cyclonic circulation** lay over Southwest Madhya Pradesh in lower tropospheric levels tilting southwards with height.
- ❖ The **Western Disturbance** as a **cyclonic circulation** lay over north Pakistan & adjoining Punjab in middle & upper tropospheric levels.
- ❖ An **upper air cyclonic circulation** lay over northeast Assam & neighbourhood at lower tropospheric levels.

Under the influence of these systems, the following weather is likely:

Northwest India:

- ❖ Isolated **heavy rainfall** likely to continue over Uttarakhand, East Rajasthan during next 7 days; Jammu & Kashmir, Himachal Pradesh, Punjab, Haryana during 30th August-02nd September; West Uttar Pradesh during 31st August-02nd September; West Rajasthan during 30th August-01st September; East Uttar Pradesh on 01st & 02nd September with **isolated very heavy rainfall very likely over Himachal Pradesh on 30th & 31st; Uttarakhand during 30th August-01st September; Jammu, Punjab on 30th; East Rajasthan on 31st August and Uttar Pradesh on 01st September.**
- ❖ Light/moderate rainfall at most/many places over Northwest India and accompanied with thunderstorm & lightning likely over Uttar Pradesh on 30th August; Rajasthan, Jammu-Kashmir-Ladakh-Gilgit-Baltistan-Muzaffarabad, Uttarakhand during next 5 days.

West India:

- ❖ **Isolated heavy rainfall** is very likely over Gujarat region, Konkan & Goa, Madhya Maharashtra during next 7 days and Saurashtra & Kutch on 30th August, 04th & 05th September with **very heavy rainfall** over Konkan, Ghat areas of Madhya Maharashtra on 30th August; Gujarat Region on 30th August & during 03rd-05th September.
- ❖ Light to moderate rainfall at most/many places very likely over the region during next 7 days.

East & Central India:

- ❖ Isolated **heavy rainfall** likely over Madhya Pradesh, Chhattisgarh during next 7 days; Sub-Himalayan West Bengal & Sikkim, Vidarbha on 30th & 31st; Jharkhand on 02nd September; Odisha during 31st August-03rd September with isolated **very heavy rainfall** over West Madhya Pradesh, Sub-Himalayan West Bengal on 30th August.
- ❖ Light to moderate rainfall at most/many places accompanied with thunderstorm & lightning likely over the region during next 7 days.

Northeast India:

- ❖ Isolated **heavy rainfall** likely to continue over Arunachal Pradesh on 30th August, 04th & 05th September; Assam & Meghalaya, Nagaland, Manipur, Mizoram & Tripura during 30th August-05th September with **very heavy rainfall** over Arunachal Pradesh on 30th August.
- ❖ Light/moderate rainfall at many places accompanied with thunderstorm & lightning likely during next 5 days.

South Peninsular India:

- ❖ Isolated **heavy rainfall** likely over Coastal Karnataka during next 7 days; Kerala on 30th August & during 03rd-05th September; Telangana on 31st; Coastal Andhra Pradesh & Yanam during 31st August-03rd September.
- ❖ Light to moderate rainfall at many places likely over the region during next 7 days.
- ❖

Fishermen warning:

Fishermen are advised not to venture into the following from 30th August to 04th September 2025 to the following Areas:

Arabian Sea

Along and off the Somalia, Oman coasts and adjoining sea areas; over most parts of central Arabian Sea and adjoining and many areas of southwest Arabian Sea; many parts of southeast Arabian sea during 30th August to 04th September; over Lakshadweep, Comorin areas during 30th August to 02nd September; some parts of Maldives area during 30th August to 01st September; along and off south Gujarat, Konkan Goa coasts during 31st August to 03rd September; along and off Karnataka coast during 30th August to 02nd September;

Bay of Bengal:

Along and off north coast during 31st August to 04th September; some southern parts of central Bay of Bengal on 30th August; over most parts of central & south Bay of Bengal and Andaman Sea during 31st August to 04th September; over Gulf of Mannar & adjoining Comorin area during 30th August to 04th September.

ii. Weather conditions and forecast over Delhi/NCR during 30th August to 02nd September 2025 (Annexure IV)

For more details, kindly refer National Weather Bulletin:

https://mausam.imd.gov.in/responsive/all_india_forecast_bulletin.php

For District wise warnings refer: <https://mausam.imd.gov.in/responsive/districtWiseWarningGIS.php>

For Fishermen warning refer <https://rsmcnewdelhi.imd.gov.in/fishermen-warning.php>

Rainfall recorded (in cm) during past 24 hours till 0830 hours IST of today, the 30th August:

Gujarat Region: Halol (dist Panchmahal) 17; Dolvan (dist Tapi) 15; Shahera (dist Panchmahal) 13; Umergam (dist Valsad) 10; Nadiad (dist Kheda), Valod (dist Tapi) 9 Each; Umreth (dist Anand), Umerpada (dist Surat), Kamrej (dist Surat) 8 Each; Olpad (dist Surat), Mandvi (dist Surat) 7 Each;

Sub Himalayan West Bengal & Sikkim: Buxaduar (dist Alipurduar) 16; Nagarkata (dist Jalpaiguri) 15; Chengmari/Diana (dist Jalpaiguri), Diana Tea Estate (dist Jalpaiguri) 14 Each; Banarhat High School (dist Jalpaiguri) 12; Domohani (dist Jalpaiguri), Maynaguri College (dist Jalpaiguri) 10 Each; Bhagatpur Tea Estate (dist Jalpaiguri) 9; Moraghat Tea Estate (dist Jalpaiguri), Tra Nagrakata (dist Jalpaiguri) 7 Each;

West Madhya Pradesh: Khargone-aws (dist Khargone), Warla (dist Barwani) 15 Each; Thikri (dist Barwani) 11; Pithampur (dist Dhar), Chachariyapati (dist Barwani) 10 Each; Pandhana (dist Khandwa), Rajpur (dist Barwani), Bhagwanpura (dist Khargone) 9 Each; Sendhwa(med) (dist Barwani) 8; Dhar-aws (dist Dhar), Dharampuri Tappa (dist Dhar), Gogawan (dist Khargone) 7 Each;

Konkan & Goa: Mhasla (dist Raigad) 14; Harnai IMD (dist Ratnagiri) 13; Murud (dist Raigad) 12; Rajapur (dist Ratnagiri) 11; Santacruz (dist Mumbai Suburban), Panvel ARG (dist Raigad), Rameshwar ARG (dist Sindhudurg) 9 Each; Tbia IMD Part Time (dist Thane), Tala (dist Raigad) 8 Each; Sanguem (dist South Goa), Roha (dist Raigad), Kudal (dist Sindhudurg), Mulde ARG (dist Sindhudurg), Devgad (dist Sindhudurg), Savarde-arg (dist Ratnagiri), Dahanu (dist Palghar) 7 Each;

West Uttar Pradesh: Nawabganj (dist Bareilly) 13; Bijnor (dist Bijnor) 12; Meerut (dist Meerut) 11; Muzaffarnagar (dist Muzaffarnagar) 10; Muzaffarnagar(t) (dist Muzaffarnagar) 9; Dhampur (dist Bijnor) 8;

Madhya Maharashtra: Erandol (dist Jalgaon) 12; Gaganbawada (dist Kolhapur) 9; Jamner (dist Jalgaon), Igatpuri (dist Nashik) 8 Each; Pathardi (dist Ahilyanagar), Amalner (dist Jalgaon) 7 Each;

Coastal Karnataka: Gersoppa (dist Uttara Kannada) 11; Manki (dist Uttara Kannada) 9; Mulki (dist Dakshina Kannada) 8; Mudubidre (dist Dakshina Kannada), Castle Rock (dist Uttara Kannada) 7 Each;

Punjab: Phangota (dist Pathankot) 11; Ranjit Sagar Dam Site (dist Pathankot) 10;

Arunachal Pradesh: Naharlagun (dist Papumpara) 10; Daparijo (dist Upper Subansiri), Itanagar (dist Papumpara) 9 Each; Naharlagun AWS (dist Papumpara) 7;

Himachal Pradesh: Chuari (dist Chamba) 10; Jogindarnagar (dist Mandi) 9; Dharmsala (dist Kangra), Rampur Bushar (dist Shimla) 7 Each;

Jammu: Udampur(iaf) (dist Udampur) 9, Reasi Kvk Aws (dist Reasi) 7, Reasi Arg (dist Reasi) 7,

East Uttar Pradesh: Jaunpur CWC (dist Jaunpur) 9; Patti (dist Pratapgarh) 8;

Assam & Meghalaya: Ranganadi Nt Xing (dist Lakhimpur) 9; Shella (dist East Khasi Hills), N.lakhimpur/Lilabari (dist Lakhimpur), Dhemaji (dist Dhemaji), Chouldhuwaghat ARG (dist Lakhimpur), Lakhimpur ARG (dist Lakhimpur) 7 Each;

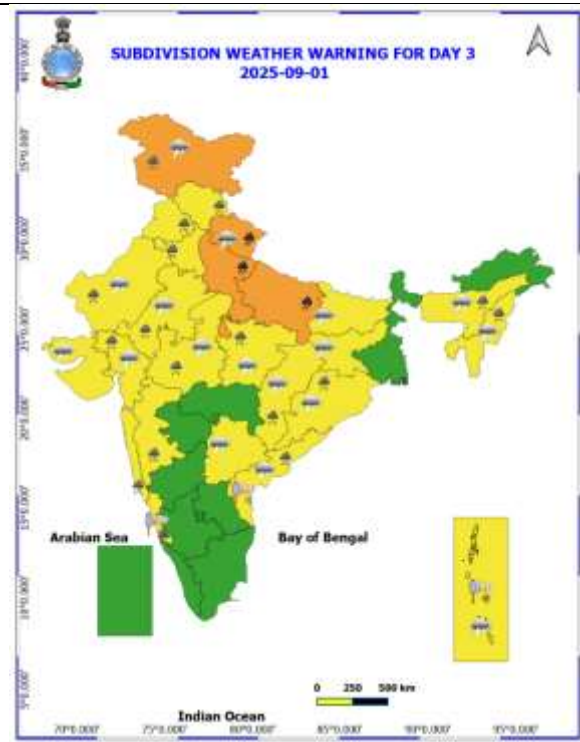
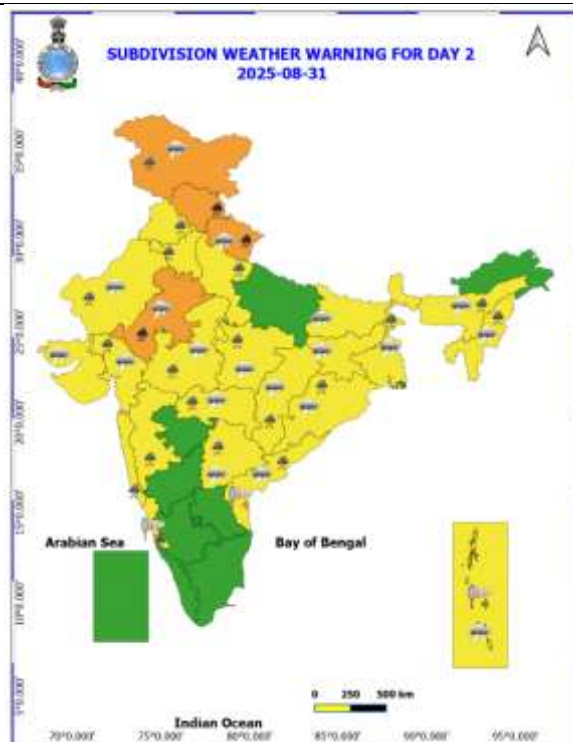
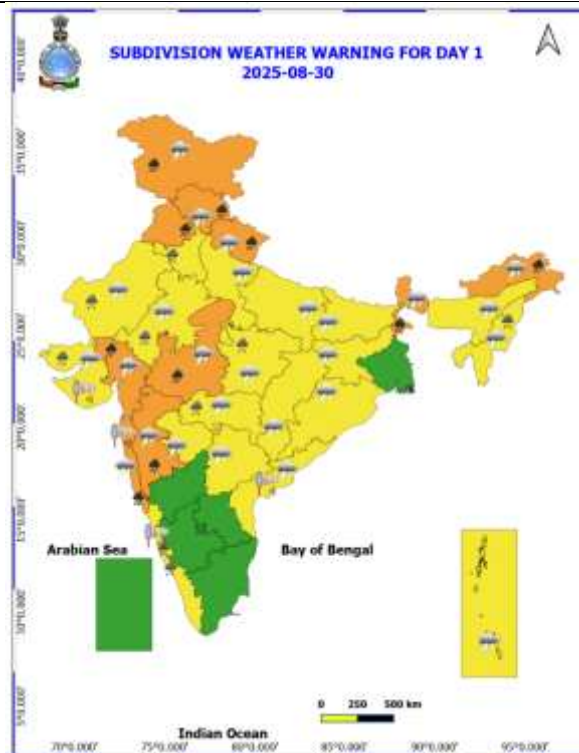
Marathwada: Hadgaon (dist Nanded) 8;

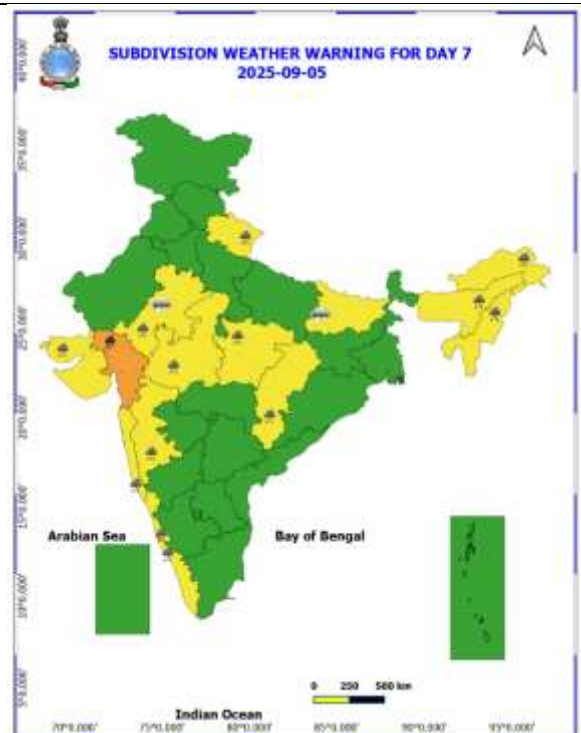
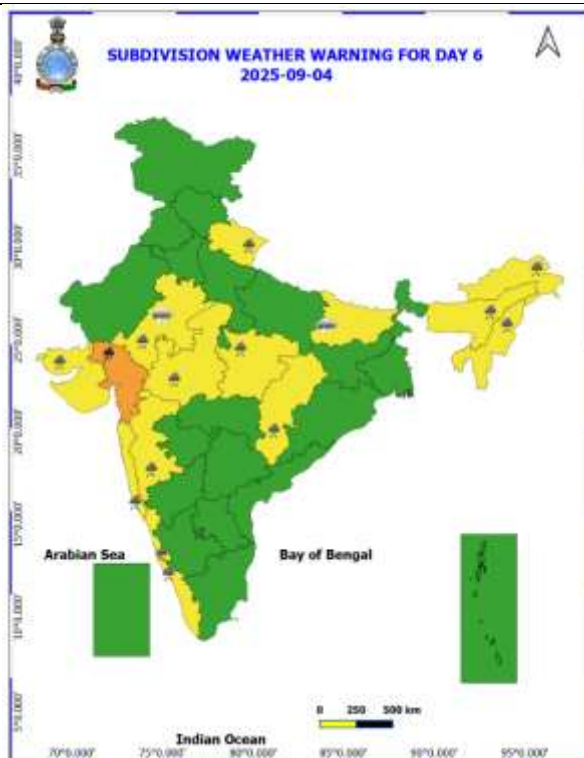
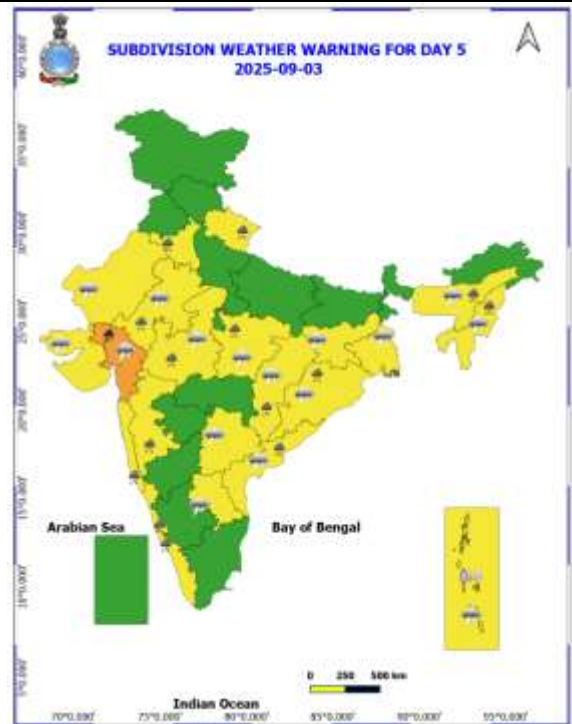
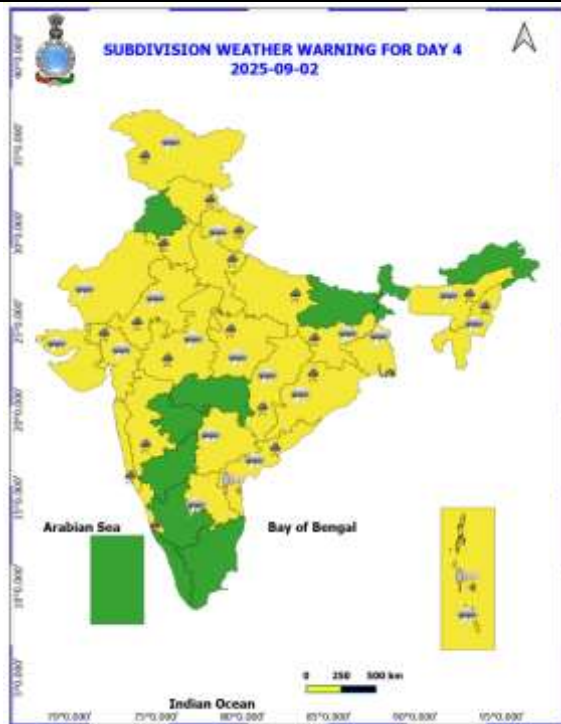
East Rajasthan: Badesar SR (dist Chittorgarh) 8; Nimbahera (dist Chittorgarh), Mavli (dist Udaipur) 7 Each;

South Interior Karnataka: Kalasa (dist Chikkamagaluru), Kottigehara (dist Chikkamagaluru), Agumbe AWS (dist Shivamogga) 7 Each.

Table-1								
7 Days Rainfall Forecast								
S.No.	Subdivision	30- Aug	31- Aug	1- Sep	2- Sep	3- Sep	4- Sep	5- Sep
		Day 1	Day 2	Day 3	Day 4	Day 5	Day 6	Day 7
1	ANDAMAN & NICOBAR ISLANDS	WS	WS	WS	WS	WS	WS	WS
2	ARUNACHAL PRADESH	WS	SCT	SCT	SCT	SCT	SCT	FWS
3	ASSAM & MEHGHALAYA	FWS	SCT	SCT	FWS	FWS	FWS	FWS
4	NAGALAND, MANIPUR, MIZORAM AND TRIPURA	FWS	SCT	SCT	SCT	FWS	FWS	FWS
5	SUB HIMALAYAN WEST BENGAL & SIKKIM	WS	FWS	FWS	FWS	FWS	FWS	FWS
6	GANGETIC WEST BENGAL	FWS	SCT	SCT	FWS	FWS	FWS	FWS
7	ODISHA	FWS	FWS	WS	WS	WS	FWS	FWS
8	JHARKHAND	SCT	FWS	SCT	FWS	FWS	FWS	SCT
9	BIHAR	SCT	SCT	ISOL	ISOL	ISOL	SCT	SCT
10	EAST UTTAR PRADESH	SCT	SCT	WS	FWS	SCT	ISOL	SCT
11	WEST UTTAR PRADESH	SCT	FWS	WS	FWS	SCT	ISOL	SCT
12	UTTARAKHAND	WS	WS	WS	WS	FWS	FWS	FWS
13	HARYANA, CHANDIGARH & DELHI	SCT	FWS	FWS	FWS	SCT	SCT	SCT
14	PUNJAB	FWS	FWS	FWS	SCT	ISOL	ISOL	ISOL
15	HIMACHAL PRADESH	WS	WS	WS	FWS	SCT	SCT	SCT
16	JAMMU AND KASHMIR AND LADAKH	FWS	FWS	WS	FWS	SCT	DRY	DRY
17	WEST RAJASTHAN	FWS	FWS	SCT	SCT	ISOL	ISOL	ISOL
18	EAST RAJASTHAN	FWS	FWS	FWS	FWS	FWS	FWS	SCT
19	WEST MADHYA PRADESH	WS	WS	WS	WS	FWS	FWS	FWS
20	EAST MADHYA PRADESH	FWS	WS	WS	WS	FWS	FWS	FWS
21	GUJRAT REGION	WS	WS	WS	WS	WS	WS	WS
22	SAURASHTRA & KUTCH	FWS	SCT	SCT	SCT	SCT	FWS	FWS
23	KONKAN & GOA	WS	WS	WS	WS	WS	WS	WS
24	MADHYA MAHARASHTRA	FWS	SCT	SCT	SCT	SCT	SCT	SCT
25	MARATHWADA	FWS	SCT	ISOL	ISOL	SCT	SCT	SCT
26	VIDARBHA	FWS	FWS	FWS	FWS	FWS	FWS	WS
27	CHHATTISGARH	SCT	FWS	FWS	WS	WS	WS	FWS
28	COASTAL ANDHRA PRADESH	SCT	SCT	FWS	FWS	FWS	SCT	SCT
29	TELANGANA	SCT	SCT	SCT	SCT	SCT	SCT	SCT
30	RAYALASEEMA	ISOL	ISOL	ISOL	ISOL	ISOL	ISOL	ISOL
31	TAMILNADU & PUDUCHERRY	ISOL	ISOL	ISOL	ISOL	ISOL	ISOL	ISOL
32	COSTAL KARNATAKA	WS	WS	WS	WS	WS	WS	WS
33	NORTH INTERIOR KARNATAKA	FWS	SCT	SCT	SCT	SCT	SCT	SCT
34	SOUTH INTERIOR KARNATAKA	SCT	SCT	SCT	SCT	SCT	SCT	SCT
35	KERALA AND MAHE	WS	FWS	SCT	SCT	FWS	FWS	FWS
36	LAKSHADWEEP	FWS	SCT	SCT	SCT	SCT	SCT	SCT

- As the lead period increases forecast accuracy decrease.





- Action may be taken based on ORANGE AND REDCOLOUR warnings.
- Vulnerable regions likely urban and hilly areas action may be initiated for heavy rainfall warning.
- As the lead period increases forecast accuracy decreases.

Detailed districtwise Multi Hazard weather warning for next five days available at
<https://mausam.imd.gov.in/responsive/districtWiseWarningGIS.php>

Weather forecast over Delhi/NCR during 30th August to 02nd September 2025**Past Weather:**

There has been fall in the minimum temperature up to 1 - 2°C and fall in maximum temperature up to 2 - 5°C over Delhi/NCR during the past 24 hours. The maximum and minimum temperatures over Delhi were around 30 to 31°C and 23 to 25°C respectively. The minimum temperature was below normal up to 1 - 2°C and maximum temperature was below normal up to 3 - 5°C. Generally cloudy sky conditions with predominant surface wind from the east direction with wind speeds up to 18 kmph prevailed during the past 24 hours. Very light to light rain/thundershowers at most places with moderate rain at isolated places has been recorded in Delhi. Generally cloudy sky conditions with a wind speed of less than 16 kmph from the southeast direction prevailed over the region in the forenoon today.

Weather Forecast:

30.08.2025: Generally cloudy sky. One or two spells of very light to light rain/thundershowers during afternoon/evening. The maximum temperatures over Delhi are likely to be in the range of 32 to 34°C. The maximum temperature will be below normal up to 1 to 2°C. The predominant surface wind will likely be from the southeast direction with a wind speed of up to 15-20 kmph during the afternoon hours. The wind speed will decrease becoming less than 16 kmph from the southeast direction during the evening and night.

31.08.2025: Generally cloudy sky. Few spells of very light to light rain/thundershowers at most places with moderate rain at few places. The maximum and minimum temperatures over Delhi are likely to be in the range of 31 to 33°C and 22 to 24°C respectively. The minimum temperature will be below normal up to 2 to 4°C and the maximum temperature will be below normal up to 1 to 3°C. The predominant surface wind will likely be from the southeast direction with a wind speed of up to 10 - 15 kmph during morning hours. The wind speed will gradually increase becoming less than 20 kmph from the southeast direction in the afternoon. The wind speed will decrease becoming less than 16 kmph from the southeast direction during the evening and night.

01.09.2025: Generally cloudy sky. Few spells of light to moderate rain/thundershowers at most places. The maximum and minimum temperatures over Delhi are likely to be in the range of 30 to 32°C and 22 to 24°C respectively. The minimum temperature will be below normal up to 2 to 4°C and the maximum temperature will be below normal up to 2 to 4°C. The predominant surface wind will likely be from the southeast direction with a wind speed of up to 15-20 kmph during morning hours. The wind speed will gradually decrease becoming less than 16 kmph from the southeast direction in the afternoon. The wind speed will decrease becoming less than 12 kmph from the southeast direction during the evening and night.

02.09.2025: Generally cloudy sky. Possibility of few spells of very light to light rain/thundershowers at most places with moderate rain at isolated places. The maximum and minimum temperatures over Delhi are likely to be in the range of 30 to 32°C and 21 to 23°C respectively. The minimum temperature will be below normal up to 3 to 5°C and the maximum temperature will be below normal up to 2 to 4°C. The predominant surface wind will likely be from the southeast direction with a wind speed of less than 20 kmph during the morning hours. The wind speed will gradually increase becoming less than 22 kmph from the southeast direction in the afternoon. The wind speed will decrease becoming less than 18 kmph from the southeast direction during the evening and night.

Impact expected and Action Suggested due to light to moderate rainfall with thundershowers:

- Damage to standing crops, Minor to major damage to power and communication lines due to breaking of branches, Partial damage to vulnerable structures due to strong winds, Loose objects may fly.
- People are advised to keep a watch on the weather for worsening conditions and be ready to move to safer places accordingly, stay indoors, close windows & doors and avoid travel if possible, take safe shelters; do not take shelter under trees, do not lie on concrete floors and do not lean against concrete walls, unplug electrical/ electronic appliances, immediately get out of water bodies, keep away from all the objects that conduct electricity.

Impact & Action Suggested due to

- ❖ **Isolated very heavy rainfall** very likely over Himachal Pradesh on 30th & 31st; Uttarakhand during 30th August-01st September; Jammu, Punjab on 30th; East Rajasthan on 31st August and Uttar Pradesh on 01st September; Konkan, Ghat areas of Madhya Maharashtra on 30th August, West Madhya Pradesh, Sub-Himalayan West Bengal, Arunachal Pradesh on 30th August; Gujarat Region on 30th August & during 03rd-05th September.

Impact Expected

- Localized Flooding of roads, water logging in low lying areas and closure of underpasses mainly in urban areas of the above region.
- Occasional reduction in visibility due to heavy rainfall.
- Disruption of traffic in major cities due to water logging in roads leading to increased travel time.
- Minor damage to kutcha roads.
- Possibilities of damage to vulnerable structure.
- Localized Landslides/Mudslides/landslips/mudslips/landsinks/mudsinks.
- Damage to horticulture and standing crops in some areas due to inundation.
- It may lead to riverine flooding in some river catchments (for riverine flooding please visit Web page of CWC)

Action Suggested

- Check for traffic congestion on your route before leaving for your destination.
- Follow any traffic advisories that are issued in this regard.
- Avoid going to areas that face the water logging problems often.
- Avoid staying in vulnerable structure.

Agromet advisories for likely impact of Heavy / Heavy to Very Heavy / Extremely Heavy Rainfall

- In **Jammu and Kashmir**, make arrangements to drain out excess water from rice, maize, green gram and black gram fields in **Sub Tropical Zone** and maize, *khari* pulses, rice and vegetables in **Intermediate Zone**.
- In **Himachal Pradesh**, maintain proper drainage channels in ginger, turmeric and maize fields in **Mid Hills Sub Humid Zone**; rice, maize and vegetable fields in **Sub Montane and Low Hills Sub Tropical Zone** and rajmash, potato, barley and vegetable fields in **High Hill Temperate Dry Zone**. In **High Hills Sub Temperate Wet Zone**, postpone transplanting of cabbage and cauliflower. Cover the vegetable nursery and crop with poly sheet and make proper drainage channels in fields of maize, finger millet and vegetables to avoid water stagnation.
- In **Uttarakhand**, ensure drainage of excess water from the fields of green gram, black gram, barnyard millet and finger millet in **Sub Humid Sub Tropic Zone** and sugarcane, black gram, green gram, soybean and maize in **Bhabar and Tarai Zone**. In **Hill Zone**, postpone sowing of vegetable pea & radish and provide proper drainage in fields of finger millet, kidney beans and vegetable crops.
- In **Punjab**, maintain proper drainage in sugarcane, green gram and chilli fields in **Undulating Plain Zone** and green gram and soybean fields in **Sub Montane Undulating Zone**
- In **Haryana**, make arrangements to drain out excess water from fields of sugarcane, cotton, maize, pearl millet and vegetables in **Eastern Zone**.
- In **Maharashtra**, make arrangements to drain out excess water from fields of rice, finger millet, turmeric, groundnut, vegetables and fruit orchards in **Konkan**; rice, maize, groundnut, soybean, vegetable fields and fruit orchards in **ghat areas of Madhya Maharashtra** and cotton, pigeon pea, soybean, vegetables and fruit orchards in **Vidarbha**.
- In **Gujarat**, make arrangements to drain out excess rain water from fields of rice, sugarcane, okra, tuber crops and vegetables in **South Gujarat Heavy Rainfall Zone**; from standing crops like cotton, sugarcane, pigeon pea, banana and mango in **South Gujarat Zone** and rice, pearl millet, pigeon pea, cotton, soybean, maize and castor in **Middle Gujarat Zone**
- In **Madhya Pradesh**, make arrangements to drain excess rainwater in the fields of maize, soybean, cotton, black gram and vegetables through the field drainage channels in **Jhabua Hills Zone**.
- In **Karnataka**, provide adequate drainage facilities in rice fields and plantations of arecanut and banana in **Coastal Zone** and rice, maize, cotton, ginger fields and plantations of arecanut in **Hill Zone**.
- In **Arunachal Pradesh**, ensure proper drainage in fields of rice, soybean, finger millet, maize and banana orchards.

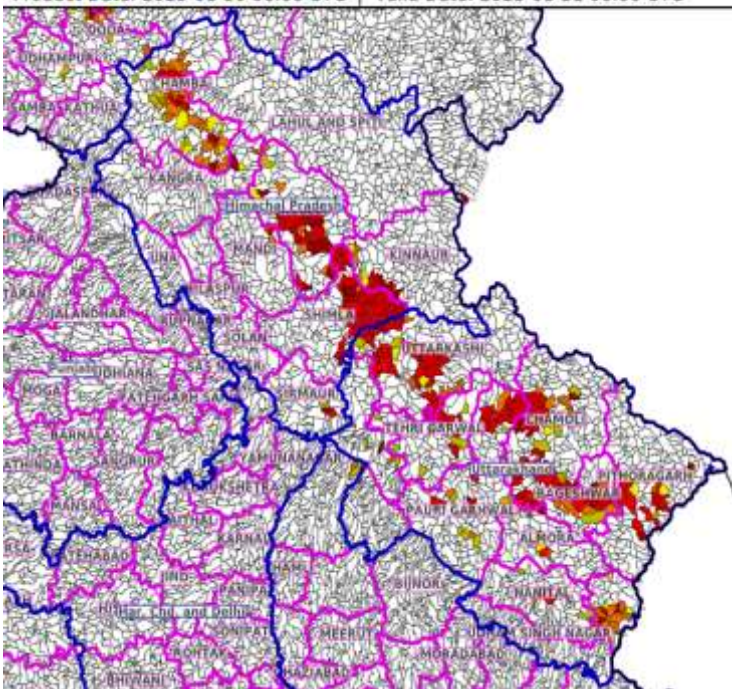
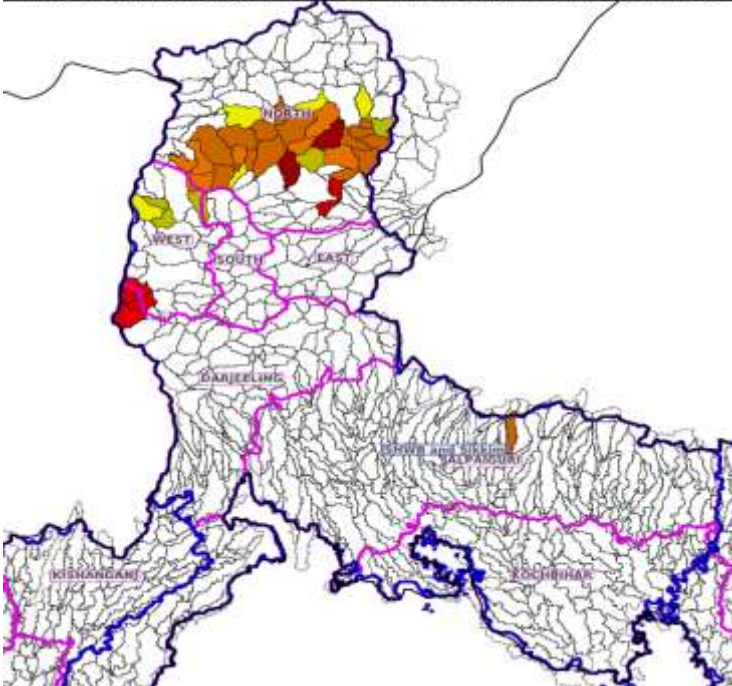
Livestock / Fishery

- Keep the animals inside the shed during heavy rainfall and provide them balanced feed.
- Store feed and fodder in a safe place to prevent spoilage.
- Construct an outlet with proper netting around the ponds to drain out excess water, thereby preventing fish from escaping in case of overflow.

Agromet advisories for likely impact of Thunderstorm / Gusty Winds / Squally Winds

- Provide mechanical support to horticultural crops and staking or support to vegetables and young fruit plants / fruit-bearing plants to avoid lodging due to strong winds.

Flash flood guidance:

<p>24 hours Outlook for the Flash Flood Risk (FFR) till 1130 IST of 31-08-2025 :</p> <p>Low to Moderate flash flood risk likely over few watersheds & neighbourhoods of following Met Sub-divisions during next 24 hours.</p> <p>Himachal Pradesh - Chamba, Kangra, Kinnaur, Kullu, Lahul&Spiti, Mandi, Shimla and Sirmaur districts. Uttarakhand - Almora, Bageshwar, Chamoli, Champawat, Dehradun, Nanital, Pauri Garhwal, Pithoragarh, Rudraprayag, Tehri Garwal and Uttarkashi districts.</p> <p>Surface runoff/ Inundation may occur at some fully saturated soils & low-lying areas over Area of Concern (AoC) as shown in map due to expected rainfall occurrence in next 24 hours.</p>	<p>Product: WRF FFR Timescale: 24-hr Region: "INDIA" Product Date: 2025-08-30 06:00 UTC Valid Date: 2025-08-31 06:00 UTC</p> 
<p>24 hours Outlook for the Flash Flood Risk (FFR) till 1130 IST of 31-08-2025 :</p> <p>Low to Moderate flash flood risk likely over few watersheds & neighbourhoods of following Met Sub-divisions during next 24 hours.</p> <p>Sub-Himalayan West Bengal & Sikkim - North Sikkim, South Sikkim, West Sikkim, Darjeeling and Jalpaiguri districts.</p> <p>Surface runoff/ Inundation may occur at some fully saturated soils & low-lying areas over Area of Concern (AoC) as shown in map due to expected rainfall occurrence in next 24 hours.</p>	<p>Product: NCUM FFR Timescale: 24-hr Region: "INDIA" Product Date: 2025-08-30 06:00 UTC Valid Date: 2025-08-31 06:00 UTC</p> 

Legends & abbreviations:

- ❖ **Heavy Rain:**64.5-115.5mm; **Very Heavy Rain:**115.6-204.4mm; **Extremely Heavy Rain:** >204.4mm.
- ❖ **Obsy:** Observatory; Automatic Weather Station; **ARG:** Automatic Rain Gauge; **dist:** District; **NH:** National Highway; **KVK:** Krishi Vigyan Kendra; **DVC:** Damodar Valley Corporation; **PTO:** Part Time Office, **Aero:** Aerodrome, **IAF:** Indian Air Force.
- ❖ **Region wise classification of meteorological Sub-Divisions:**
 - **Northwest India:** Western Himalayan Region (Jammu-Kashmir-Ladakh-Gilgit-Baltistan-Muzaffarabad, Himachal Pradesh and Uttarakhand); Punjab, Haryana-Chandigarh-Delhi; West Uttar Pradesh, East Uttar Pradesh, West Rajasthan and East Rajasthan.
 - **Central India:** West Madhya Pradesh, East Madhya Pradesh, Vidarbha and Chhattisgarh.
 - **East India:** Bihar, Jharkhand, Sub-Himalayan West Bengal & Sikkim; Gangetic West Bengal, Odisha and Andaman & Nicobar Islands.
 - **Northeast India:** Arunachal Pradesh, Assam & Meghalaya and Nagaland, Manipur, Mizoram & Tripura.
 - **West India:** Gujarat Region, Saurashtra & Kutch, Konkan & Goa, Madhya Maharashtra and Marathwada.
 - **South India:** Coastal Andhra Pradesh & Yanam, Telangana, Rayalaseema, Coastal Karnataka, North Interior Karnataka, South Interior Karnataka, Kerala & Mahe, Tamil Nadu, Puducherry & Karaikal and Lakshadweep.

LEGENDS

1. अंडमान और निकोबार द्वीपसमूह

2. अरुणाचल प्रदेश

3. असम और मेघालय

4. नागालैंड, मणिपुर, मिजोरम और त्रिपुरा

5. उप-हिमालयी पश्चिम बंगाल और सिक्किम

6. गंगीय पश्चिम बंगाल

7. ओडिशा

8. झारखंड

9. बिहार

10. पूर्वी उत्तर प्रदेश

11. पश्चिम उत्तर प्रदेश

12. उत्तराखंड

13. हरियाणा, चंडीगढ़ और दिल्ली

14. पंजाब

15. हिमाचल प्रदेश

16. जम्मू और कश्मीर और लद्दाख

17. पश्चिम राजस्थान

18. पूर्वी राजस्थान

19. पश्चिम मध्य प्रदेश

20. पूर्वी मध्य प्रदेश

21. गुजरात

22. सौराष्ट्र

23. कोंकण और गोवा

24. मध्य महाराष्ट्र

25. मराठवाड़ा

26. विदर्भ

27. छत्तीसगढ़

28. तटीय आंध्र प्रदेश और यनम

29. तेलंगाना

30. रायलसीमा

31. तमिलनाडु, पुडुचेरी और कराईकल

32. तटीय कर्नाटक

33. आंतरिक उत्तरी कर्नाटक

34. आंतरिक दक्षिणी कर्नाटक

35. केरल और माहे

36. लक्षद्वीप



1. Andaman & Nicobar Islands

2. Arunachal Pradesh

3. Assam & Meghalaya

4. Nagaland, Manipur, Mizoram & Tripura

5. Sub-Himalayan West Bengal & Sikkim

6. Gangetic West Bengal

7. Odisha

8. Jharkhand

9. Bihar

10. East Uttar Pradesh

11. West Uttar Pradesh

12. Uttarakhand

13. Haryana, Chandigarh & Delhi

14. Punjab

15. Himachal Pradesh

16. Jammu & Kashmir and Ladakh

17. West Rajasthan

18. East Rajasthan

19. West Madhya Pradesh

20. East Madhya Pradesh

21. Gujarat

22. Saurashtra

23. Konkan & Goa

24. Madhya Maharashtra

25. Marathwada

26. Vidarbha

27. Chhattisgarh

28. Coastal Andhra Pradesh & Yanam

29. Telangana

30. Rayalaseema

31. Tamilnadu, Puducherry & Karaikal

32. Coastal Karnataka

33. North Interior Karnataka

34. South Interior Karnataka

35. Kerala & Mahe

36. Lakshadweep

SPATIAL DISTRIBUTION (% of Stations reporting)

% Stations	Category	% Stations	Category
76-100	Widespread (WS/Most Places)	26-50	Scattered (SCT/A Few Places)
51-75	Fairly Widespread (FWS/Many Places)	1-25	Isolated (ISOL)



Fog



Heavy Rain



Very Heavy Rain



Extremely Heavy Rain



Thunder & Lightning



Hailstorm



Dust Raising Winds



Heavy Snow



Dust Storm



Heat Wave



Warm Night



Hot Day



Hot & Humid



Strong Surface Winds



Cold Wave



Cold Day



Ground Frost

COLOUR CODED WARNING

No Warning (No Action)

Watch (Be Aware)

Alert (Be Prepared To Take Action)

Warning (Take Action)

Probabilistic Forecast

Terms	Probability of Occurrence (%)
Unlikely	< 25
Likely	25 - 50
Very Likely	50 - 75
Most Likely	> 75

* Red colour warning does not mean "Red Alert", Red colour warning means "Take Action".

Forecast and Warning for any day is valid from 0830 hours IST of day till 0830 hours IST of next day.

For more details, kindly visit <https://mausam.imd.gov.in> or contact: 011-2434-4599

(Service to the Nation since 1875)

DEFINITION/CRITERIA

Rain/ Snow *

Heavy: 64.5 to 115.5 mm/cm *
Very Heavy: 115.6 to 204.4 mm/cm *
Extremely Heavy: > 204.4 mm/cm *

Heat Wave

When maximum temperature of a station reaches $\geq 40^{\circ}\text{C}$ for plains and $\geq 30^{\circ}\text{C}$ for hilly regions

(a) Based on Departure from normal

Heat Wave: Maximum Temperature Departure from normal 4.5°C to 6.4°C .

Severe Heat Wave: Maximum Temperature Departure from normal $\geq 6.5^{\circ}\text{C}$

(b). Based on Actual maximum temperature

Heat Wave: When actual maximum temperature $\geq 45^{\circ}\text{C}$.

Severe Heat Wave: When actual maximum temperature $\geq 47^{\circ}\text{C}$.

(c). Criteria for heat wave for coastal stations

When maximum temperature departure is $> 4.5^{\circ}\text{C}$ from normal. Heat Wave may be described provided maximum temperature $\geq 37^{\circ}\text{C}$.

Warm Night

When maximum temperature remains 40°C

Warm Night: When minimum temperature departure 4.5°C to 6.4°C .

Severe Warm Night: When minimum temperature departure $> 6.4^{\circ}\text{C}$.

Cold Wave

When minimum temperature of a station $\leq 10^{\circ}\text{C}$ for plains and $\leq 0^{\circ}\text{C}$ for hilly regions.

(a). Based on departure

Cold Wave: Minimum Temperature Departure from normal -4.5°C to -6.4°C .

Severe Cold Wave: Minimum Temperature Departure from normal $\leq -6.5^{\circ}\text{C}$

(b) Based on actual Minimum Temperature (for Plains only)

Cold Wave: When Minimum Temperature is $\leq 4.0^{\circ}\text{C}$

Severe Cold Wave: When Minimum Temperature is $\leq 2.0^{\circ}\text{C}$

(c) For Coastal Stations

When Minimum Temperature departure is $\leq -4.5^{\circ}\text{C}$ & actual Minimum Temperature is $\leq 15^{\circ}\text{C}$

Cold Day

When minimum temperature of a station $\leq 10^{\circ}\text{C}$ for plains and $\leq 0^{\circ}\text{C}$ for hilly regions

Based on departure

Cold Day: Maximum Temperature Departure from normal -4.5°C to -6.4°C .

Severe Cold Day: Maximum Temperature Departure from normal $\leq -6.5^{\circ}\text{C}$

Fog

Phenomenon of small droplets suspended in air and the horizontal visibility $< 1\text{km}$

Moderate Fog: When the visibility between 500-200 metres

Dense Fog: when the visibility between 50- 200 metres

Very Dense Fog: when the visibility < 50 metres

Thunderstorm

Sudden electrical discharges manifested by a flash of light (Lightning) and a sharp rumbling sound (thunder)

Dust/Sand Storm

An ensemble of particles of dust or sand energetically lifted to great heights by a strong and turbulent wind.

Frost

Ice deposits on ground

Air temperature $\leq 4^{\circ}\text{C}$ (over Plains)

Squall

A strong wind that rises suddenly, lasts for atleast 1 minute.

Moderate: Wind speed 52-61 kmph

Severe: Wind speed 62-67 kmph

Very Severe: Wind speed > 67 kmph

Sea State

Effect of various waves in the sea over specific area

Rough to very rough: Wind speed 41-62 kmph (22-33 knots) & Wave height 2.5-6 metre

High to very high: Wind speed 63-117 kmph (34-63 knots) & Wave height 6-14 metre

Phenomenal: Wind speed > 117 kmph (> 63 knots) & Wave height > 14 metre

Cyclone

Cyclonic Storm: Wind speed 62-87 kmph (34-47 knots)

Severe Cyclonic Storm: Wind speed 88-117 kmph (48-63 knots)

Very Severe Cyclonic Storm: Wind speed 118-165 kmph (64 - 89 knots)

Extremely Severe Cyclonic Storm: Wind speed 166-220 kmph (90 -119 knots)

Super Cyclone Storm: Wind speed > 220 kmph (> 119 knots)

* Red colour warning does not mean "Red Alert", Red colour warning means "Take Action".

Forecast and Warning for any day is valid from 0830 hours IST of day till 0830 hours IST of next day.

For more details, kindly visit <https://mausam.imd.gov.in> or contact: 011-2434-4599

(Service to the Nation since 1875)

Hot and Humid: When maximum temperatures remain 3°C above normal along with the above normal relative humidity.